



Photos: The Harbour Bridge and Opera House from Campbell's Cove, Patty Mazza

Sydney

A Welcoming City for People with Disabilities and Seniors, Accessible Accommodation



Easy Access Australia Publishing Pty Ltd

Disclaimer

Easy Access Australia Publishing Pty Ltd, The University of Technology Sydney and the City of Sydney make no representation about the content and suitability of this information for any purpose. It is provided "as is" and "as available" without any guarantees or warranty, expressed or implied as to the currency, accuracy, quality, completeness, availability or usefulness of data, information, product, or process provided through this service, and no responsibility or legal liability is assumed for any damages or inconvenience arising from its use.

In addition the City of Sydney website contains disclaimers:
<http://www.cityofsydney.nsw.gov.au/copyright/Disclaimer.asp>

Sydney, A Welcoming City for People with Disabilities and Seniors, Accessible Accommodation

Amora Sydney Jamison

11 Jamison St
Sydney 2000

The Amora Jamison Hotel is located a short stroll from George St, Circular Quay and Wynyard Station/bus terminus. It is close to shopping and restaurants and particularly The Rocks historic tourist precinct.

Number of Access Rooms:	15
Star Rating:	5
Freecall:	Nil
Phone:	61 2 9696 2500
TTY Phone:	Nil
Web:	www.amorahotels.com.au/Jamison
Email:	res@sydney.amorahotels.com.au

Transport and parking

- Valet carparking is available in the commercial basement carpark- there is one dedicated access space.
- Operated by Secure Parking
<http://www.secureparking.com.au/>
- Entry is from Jamison St.
- Taxi to drop off area in front of the hotel, level entry. Buses along George St. then a short stroll up Jamison St, but it's quite steep.
- Trains from Circular Quay, walk to the hotel.
- Jamison is steep up from George St, approx 50m.
- A short graded ramp 4.7% (approx 1:20) has a cross grade at one part.
- Level into the hotel from this point.



Photo: Amora Jamison and ramped entry off Jamison St.



Sydney, A Welcoming City for People with Disabilities and Seniors, Accessible Accommodation

Main entry and foyer

- The foyer is accessed by two wide hinge glass doors, concierge staff open the doors.
- The foyer is large brightly lit comprising polished marble and carpeted seating area.
- The Reception desk is located to the right upon entry.
- Reception desk height 1.16m.



Photo: Reception Foyer.

Signage, Toilets, Telephones, Lifts and Corridors

Signage, Toilets, Telephones	Corridors
<p>Signage clear and highly visible for:</p> <ul style="list-style-type: none"> ○ EXIT <ul style="list-style-type: none"> • The accessible toilets are located up from reception on Levels 1 by the Restaurant & 2 for the Conference Rooms. • There is no accessible telephone nearby. 	<ul style="list-style-type: none"> • Corridor width is 1.7m. • Flooring is low pile carpet. • Access rooms are located at the corner of the building approx 20m to the lifts. • Hand rails are not installed. • No tactile way finding information.
Lifts	
<ul style="list-style-type: none"> • Tactile lift call button. • Call button height from floor surface is approx. 1m. • An Audible lift arrival signal is provided. • No internal Audio Floor Announcement. • Internal buttons have Braille and tactile components in the range 1m – 1.2m. 	

Sydney, A Welcoming City for People with Disabilities and Seniors, Accessible Accommodation

The Accessible Room(s)

Key Measurements: Access Rooms comprise L shaped entry and bedroom; 4.6m x 3.5m

- Door width 750mm, the clear open width.
- Latchside space to wall/corner is 350mm.
- Lever handle, 1m height from the floor.
- Magnetic swipe card entry.
- Automatic door return.
- Internal corridor width 1.44m wide for 1.9m the right turn 1.2m wide for 1.5m.
- Queen bed 610mm in height to the floor.
- Limited space underneath, no capacity to increase this space.
- Distance from the bed to furniture/wall at:
 - Foot 700mm to the TV cabinet,
 - Left to wall 1.1m,
 - Right to curtains 1.7m.
- Furniture can be removed upon request and the bed is on castors.
- Ta/coffee making facilities are reachable.
- The airconditioner control is wall mounted at 1.0m above the floor.
- Teletext is available for the Television.
- Lights and TV (remote) can be operated from bed.
- The clothes hanging space is not reachable.
- The views are across the city.



Photo: Showing room from entry, bathroom, TV, bar cabinet and bed.



Photo: Showing end of bed, TV cabinet and room entry.

Sydney, A Welcoming City for People with Disabilities and Seniors, Accessible Accommodation

Bathroom 4.0m x 2.4m

- Sliding door, width 900mm
- Light switches at 1m.

The Basin

- Basin height bottom front edge to floor 780mm.
- A Lever tap is provided.

The Toilet

- Height (top of pan) 450mm.
- Front of bowl to back wall 800mm.
- Space between side of bowl and grab rail is 250mm.
- Toilet Grab rails height 800mm.

The Shower

- Wheel-in-shower with no hob, measuring 1.1m x 1.18m.
- A shower seat is built in as a tiled fixed seat 430mm high, 220mm wide & 1m long
- A Hand-held shower rose is provided.
- Grab rails are 800mm.
- Lever tap 1m above the floor.



Photo: Bathroom basin area.



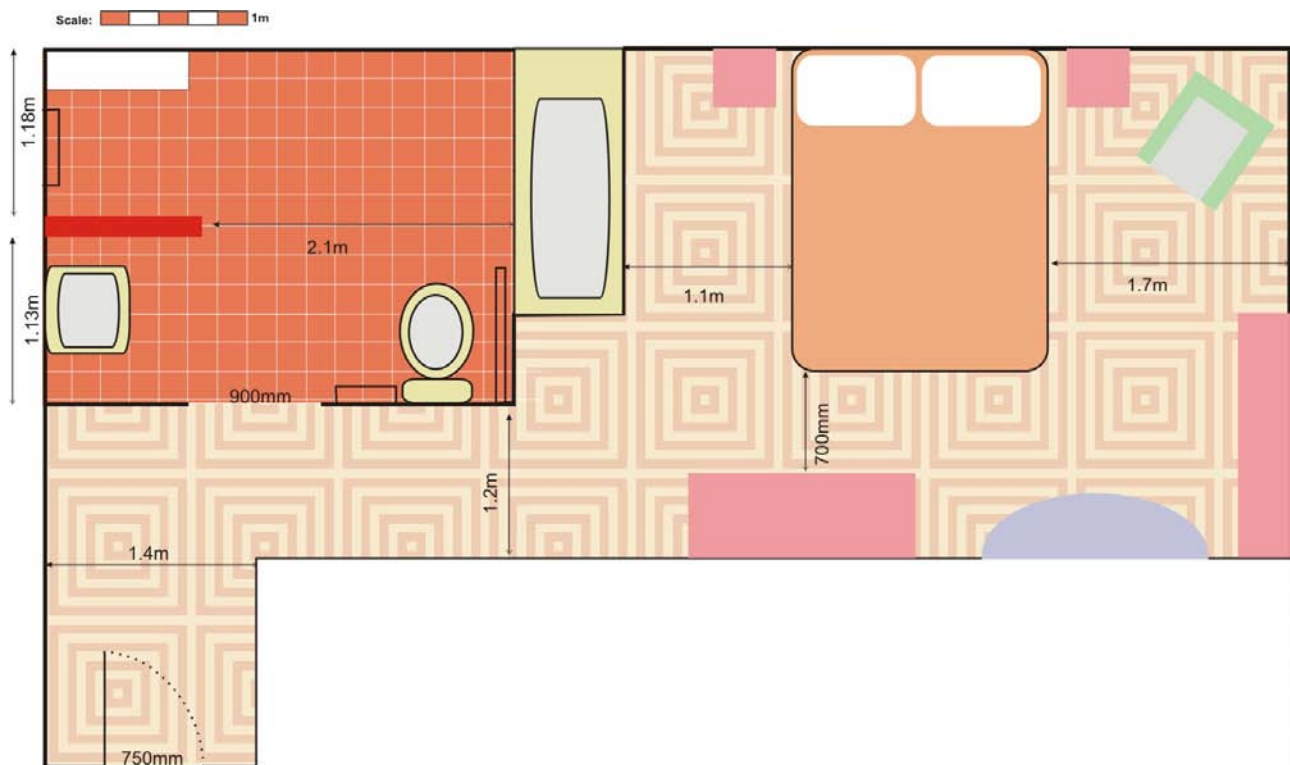
Photo: Toilet and grabrail.



Photo: Shower area with tiles seat.

Sydney, A Welcoming City for People with Disabilities and Seniors, Accessible Accommodation

Bathroom Floorplan:





Respiratory and Other Sensitivity

Respiratory and Other Sensitivity

- Management pursues a smoke, chemical and toxin-free environment.
- The hotel employs EcoLab environmentally friendly products and avoids the use of chemical pesticides, herbicides and toxic pest controls.
- Please contact management in respect to specific information on its policy covering assistance animals. Guests with guide dogs are welcomed.

Sydney, A Welcoming City for People with Disabilities and Seniors, Accessible Accommodation

Other Facilities

Restaurants & Bar	Emergency
<ul style="list-style-type: none"> ▪ Eating and drinking options are located one level up from Reception: <ul style="list-style-type: none"> • Charr Restaurant • The Gallery Restaurant & Bar • Inbargo Sydney ▪ Tables are pedestal and can be moved. ▪ An Accessible unisex toilet is near by on this level. 	<ul style="list-style-type: none"> ▪ There is a documented Emergency procedure. ▪ The Emergency warning system comprises an Audio Alarm only. ▪ The Emergency alarms are located in all rooms and public places.
Swimming Pool	
<ul style="list-style-type: none"> ▪ A swimming pool is available. ▪ An accessible shower/toilet/changing room is not provided. No lift or hoist into/out of the pool 	 <p style="text-align: center;"><i>Photo: Courtesy of Amora Hotel, swimming pool.</i></p>
Other Services	
<ul style="list-style-type: none"> ▪ Management fosters a “can do attitude” amongst staff and welcomes guests with disabilities. ▪ Assistance hiring equipment is available. ▪ Furniture can be removed from the room. ▪ Amora Spa provides a luxurious range of contemporary Asian-styled rejuvenation treatments on Level 3. ▪ The Jamison Club on Level 31 offers easy access, additional benefits and is a spacious place to relax with stunning city views. An additional fee applies. 	 <p style="text-align: center;"><i>Photo: Courtesy Amora Jamison.</i></p>