



*Photos: The Harbour Bridge and Opera House from Campbell's Cove, Patty Mazza*

## Sydney

# A Welcoming City for People with Disabilities and Seniors, Accessible Accommodation



**Easy Access Australia Publishing Pty Ltd**

### **Disclaimer**

Easy Access Australia Publishing Pty Ltd, The University of Technology Sydney and the City of Sydney make no representation about the content and suitability of this information for any purpose. It is provided "as is" and "as available" without any guarantees or warranty, expressed or implied as to the currency, accuracy, quality, completeness, availability or usefulness of data, information, product, or process provided through this service, and no responsibility or legal liability is assumed for any damages or inconvenience arising from its use.

In addition the City of Sydney website contains disclaimers:  
<http://www.cityofsydney.nsw.gov.au/copyright/Disclaimer.asp>

# Sydney, A Welcoming City for People with Disabilities and Seniors, Accessible Accommodation

---

## BreakFree on George

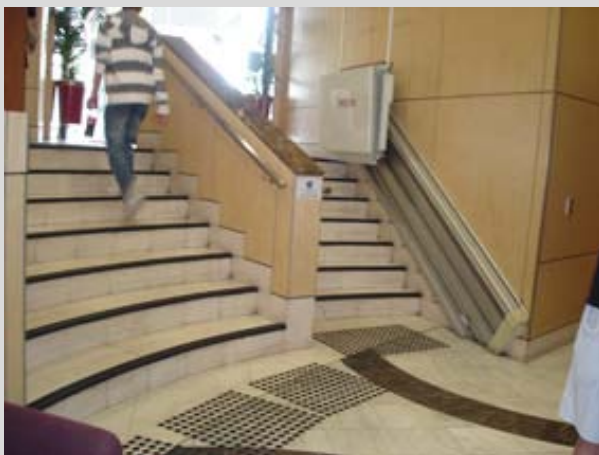
653 George St  
Sydney 2000

The BreakFree is a short stroll to the Entertainment Centre at Darling Harbour and amidst Sydney's Chinatown.

Number of Access Rooms:	10
Star Rating:	4.5
Freecall:	Nil
Phone:	61 2 9284 4500
TTY Phone:	Nil
Web:	<a href="http://www.breakfree.com.au">www.breakfree.com.au</a>
Email:	<a href="mailto:George.res@breakfree.com.au">George.res@breakfree.com.au</a>

## Transport and parking

- Commercial carparking located across George St and into Campbell St, in the Capitol Square Carpark, call to arrange a suitable parking space.
- <http://www.capitolsquare.com.au/html/carpark.html> or 61 2 9212 4164
- [carpark@capitolsquare.com.au](mailto:carpark@capitolsquare.com.au)



*Photo: Left: steps to George St and the stair/platform lift.  
Right: More accessible entry from Sussex St, just around the corner.*

# Sydney, A Welcoming City for People with Disabilities and Seniors, Accessible Accommodation

## Main entry and foyer

- The main entry is from George St through auto doors. However, there are steps down to Reception so a stair/platform lift is provided. A better access is from around the corner into Sussex St where the entry is level through auto doors.
- Compact reception area, seating provided
- Floor surface is tiled.
- Height of reception desk 1.17m.



*Photo: Reception desk with steps to George St entry.*

## Signage, Toilets, Telephones, Lifts and Corridors

<ul style="list-style-type: none"> <li>• The Signage clear and highly visible for:             <ul style="list-style-type: none"> <li>○ EXIT,</li> <li>○ Toilets, Accessible Toilet</li> </ul> </li> <li>• The accessible toilet is behind reception, adjacent to the lifts.</li> <li>• No accessible telephone.</li> </ul>	
<p><b>Lifts</b></p>	<p><b>Corridors</b></p>
<ul style="list-style-type: none"> <li>• There is a Tactile call button.</li> <li>• Call button height from floor surface is approx 1m.</li> <li>• An Audible lift arrival signal is provided.</li> <li>• No Internal Audio Floor Announcement.</li> <li>• Internal height of lift buttons in the range 1.2m-1.4m.</li> <li>• Internal buttons are Tactile or Braille.</li> </ul>	<ul style="list-style-type: none"> <li>• Corridor width 1.44m.</li> <li>• Hand rails are not installed.</li> <li>• Floor surface is low pile carpet.</li> <li>• Location of Accessible rooms close to lifts, approx 5m.</li> <li>• No tactile way finding information.</li> </ul>

# Sydney, A Welcoming City for People with Disabilities and Seniors, Accessible Accommodation

## The Accessible Room(s)

**Key Measurements: Access Rooms Not rectangular shaped room (see floorplan) but approx 9m x 4m**

- Door width 750mm, measures the clear open width.
- Lever handle at height from floor 920mm
- Swipe card entry
- Automatic door return.
- Internal corridor width at its narrowest point 1.2m.
- Number of beds is one, Queen.
- Height of main bed from top of mattress to floor 580mm
- Limited space underneath main bed
- Distance from the foot of the bed to the furniture or wall 650mm
- Distance either side of the bed to wall or to other bed – shows circulation space 850mm
- Furniture easily be moved or removed
- Lights, Telephone, TV (remote) be operated from bed.
- The tea/coffee making facilities can be reached from a seated position.
- View from the room is city buildings.



*Photo: Room entry into corridor and bathroom. Kitchenette.*



*Photo: Room showing bed and furniture – the bed is on castors and can be moved to open space at the foot.*

# Sydney, A Welcoming City for People with Disabilities and Seniors, Accessible Accommodation

## Bathroom

**Bath room measures approx 2m x 2.9m but is irregular in shape.**

- Door width 790mm, measures the clear open width – the door opens beyond 90 degrees into the shower space.
- Door furniture:
  - Lever handle at 1m.
- Light switches height 1m

### The Shower

- There is a Wheel-in-shower.
- Hand-held shower rose.
- Shower grab rails height 775mm
- Lever taps at 1.2m
- Fold down shower seat is available, but no end-on access.
- Dimensions are approx 1m, 400 mm deep and 435 mm high



*Photo: Roll-in shower, grab rail and shower seat.*

### The Toilet

- Height (top of pan) 450 mm
- Front of bowl to back wall 720 mm.
- Centreline of bowl to side wall 425 mm
- Toilet Grab rails height 775 mm.



*Photo: Toilet, grab rails and circulation space.*

### The Basin

- Basin height front edge to floor 820 mm
- Lever tap.

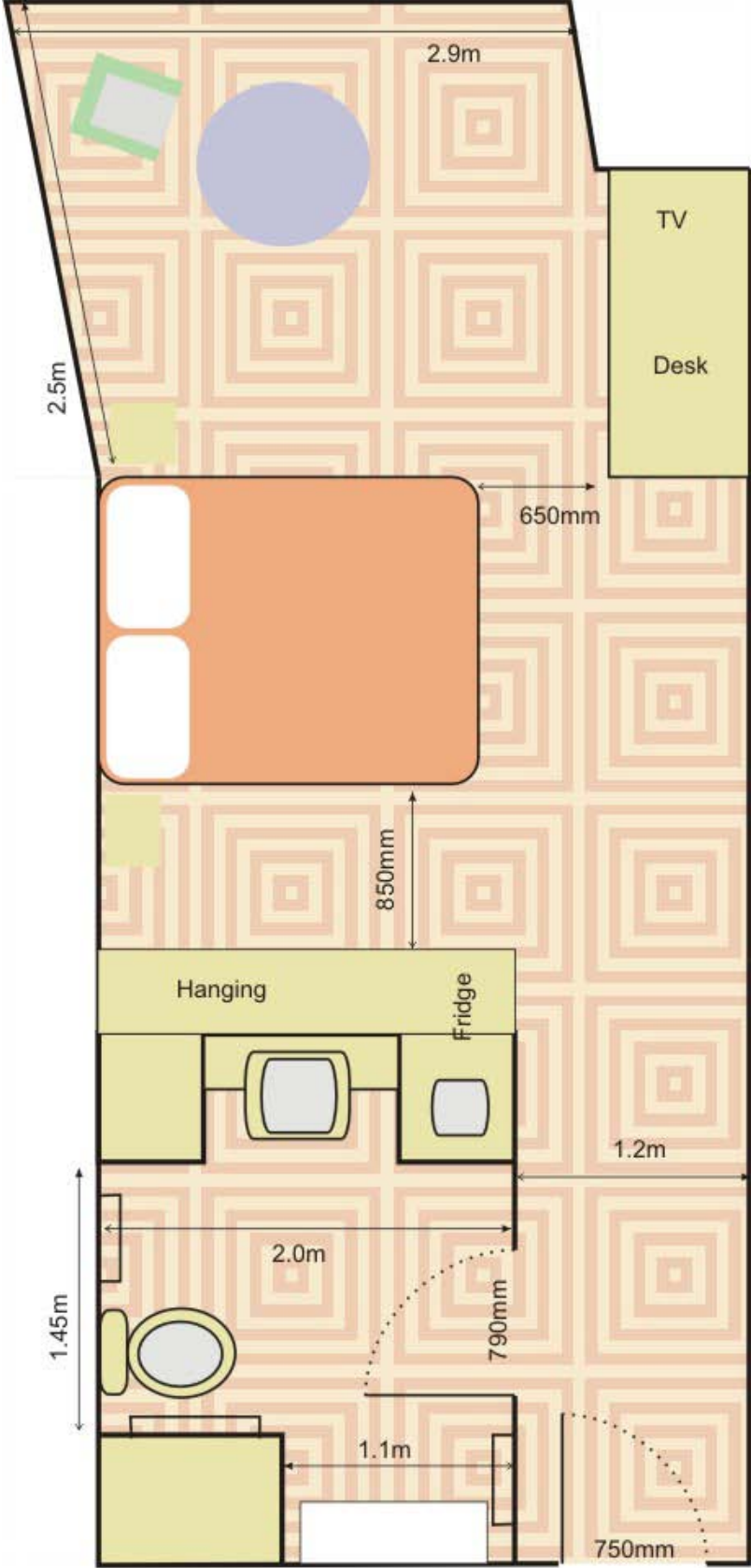


*Photo: Basin with lever tap, hairdryer.*



# Sydney, A Welcoming City for People with Disabilities and Seniors, Accessible Accommodation

## Bathroom Floorplan:



## Sydney, A Welcoming City for People with Disabilities and Seniors, Accessible Accommodation

---

### Respiratory and Other Sensitivity

<ul style="list-style-type: none"> <li>▪ Management actively pursues a smoke, chemical and toxin-free environment for people who have Respiratory and Other Sensitivities.</li> <li>• Ask management in respect to a policy relating to Assistance Dogs or Animals.</li> </ul>	
--	--

### Other Facilities

<b>Restaurant</b>	
<ul style="list-style-type: none"> <li>▪ A separately run restaurant is located on a mezzanine level above reception. It can be accessed via goods lift and through the kitchen.</li> <li>▪ A better option is one of the many restaurants or cafes near by.</li> </ul>	
<b>Swimming Pool NA</b>	
<b>Emergency</b>	<b>Other Services</b>
<ul style="list-style-type: none"> <li>▪ There a documented Emergency procedure.</li> <li>▪ The Emergency warning system comprises an Audio Alarm only.</li> <li>▪ Emergency alarms located in all rooms and public places.</li> <li>▪ The Emergency procedure involves a Floor Warden and place of Safe Refuge.</li> </ul>	<ul style="list-style-type: none"> <li>▪ Management fosters a “can do attitude” amongst staff and welcome guests with disabilities.</li> <li>▪ Management can assist guests arrange for equipment hire, eg hoist, shower chair etc.</li> </ul>