



Photos: The Harbour Bridge and Opera House from Campbell's Cove, Patty Mazza

Sydney

A Welcoming City for People with Disabilities and Seniors, Accessible Accommodation



Easy Access Australia Publishing Pty Ltd

Disclaimer

Easy Access Australia Publishing Pty Ltd, The University of Technology Sydney and the City of Sydney make no representation about the content and suitability of this information for any purpose. It is provided "as is" and "as available" without any guarantees or warranty, expressed or implied as to the currency, accuracy, quality, completeness, availability or usefulness of data, information, product, or process provided through this service, and no responsibility or legal liability is assumed for any damages or inconvenience arising from its use.

In addition the City of Sydney website contains disclaimers:
<http://www.cityofsydney.nsw.gov.au/copyright/Disclaimer.asp>

Sydney, A Welcoming City for People with Disabilities and Seniors, Accessible Accommodation

Hotel IBIS King St Wharf

22 Shelley St
Sydney 2000

Located across in quiet Shelley St the IBIS is very close to the King St Wharf area of Darling Harbour. There are many great restaurants available but the hotel is also close to the docking point for a number of cruise ships.

Number Of Access Rooms:	4
Star Rating:	3.5
Freecall:	Nil
Phone:	61 2 8243 0700
TTY Phone:	Nil
Web:	www.ibishotel.com
Email:	H6412-re01@accor.com

Transport and parking

- Taxi, ferry to King St Wharf.
- Guest parking is located in a basement car park where there are 16 Hotel IBIS spaces and one dedicated access space.
- Arrange the parking through the hotel and enter from Sussex St.
- An independent carpark, The King St Wharf Carpark is across Shelley St. from the hotel.
- This carpark is run by Secure Parking <http://www.secureparking.com.au/>



Photo: Entry from Shelley St.

Sydney, A Welcoming City for People with Disabilities and Seniors, Accessible Accommodation

Main entry and foyer

- Level entry from Shelley Street through automatic glass doors.
- Compact Reception and Bar area offers circulation space and seating and is well lit.
- Tiled flooring.
- Reception desk height 1.16m.
- The Bistro is adjacent to Reception.



Photo: Entry through auto doors.

Signage, Toilets, Telephones, Lifts and Corridors

Signage, Toilets, Telephones	Corridors
<p>Signage clear and highly visible for:</p> <ul style="list-style-type: none"> ○ EXIT <ul style="list-style-type: none"> • There is an accessible toilet, in the passage next to Reception. • There is no accessible telephone. 	<ul style="list-style-type: none"> • Flooring is dark tiling. • Corridor width 1.3m at the narrowest point. • Access rooms are located close to the lifts. • Hand rails are not installed. • No tactile way finding information.
Lifts	
<ul style="list-style-type: none"> • Tactile lift call button. • Call button height from floor surface is approx. 1m. • An Audible lift arrival signal is provided. • There is an audio floor announcement. • Internal buttons have a tactile component. 	

Sydney, A Welcoming City for People with Disabilities and Seniors, Accessible Accommodation

The Accessible Room(s)

Key Measurements: 3m x 4.2m

- Door width 840mm clear open width.
- Lever handle 1m above the floor.
- Swipe card entry from the corridor triggers an automatic door opener. A wall mounted green button triggers the door to open from the internal corridor.
- Automatic door return.
- Interconnecting room.
- One Queen sized bed.
- Height of main bed from top of mattress to floor 570mm.
- Space underneath the bed approx 25cm.
- Distance from the bed;
 - Foot of the wall 1.1mm.
 - Right side to the wall 885mm
 - Left side to the desk 1.2m.
- Lights and TV (remote) can be operated from bed.
- Phone is located on the desk, away from the bed.
- Light switches 950mm.
- Airconditioning control height 960m.
- The tea/coffee making facilities can be reached.
- The view from the window is city buildings.



Photo: Room entry and circulation space.



Photo: Room, bed, desk and robe.

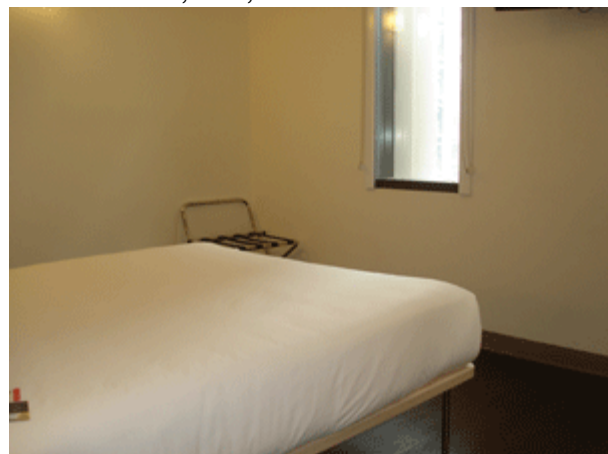


Photo: Room layout with bed and space under.

Sydney, A Welcoming City for People with Disabilities and Seniors, Accessible Accommodation

Bathroom measures 2.4m x 2.4mm

- Sliding door width 890mm.
- Basin height front edge to floor 770mm.
- Lever taps.

The Toilet

- Height (top of pan) 450mm.
- Front of bowl to back wall 800mm.
- Centreline of bowl to side wall 460mm.
- Toilet Grab rails height 800mm.

The Shower

- Wheel-in-shower.
- Hand-held shower rose with Lever taps 1m
- Shower grab rails height 800mm.
- Fold down shower seat, 1m x 300mm x 480mm high.



Photo: Basin from bathroom entry.

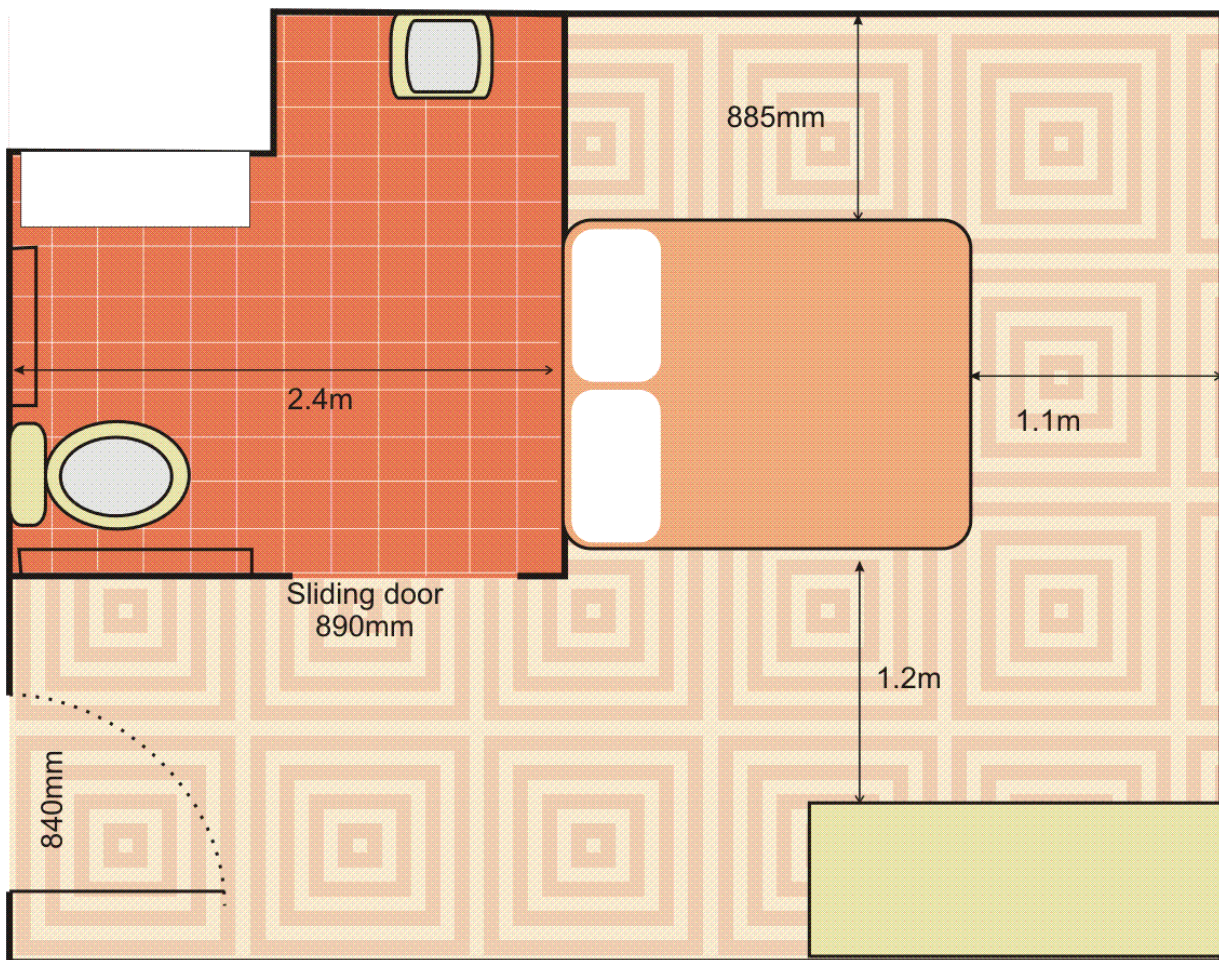


Photo: Toilet and grab rails. Roll-in shower, grab rail

Sydney, A Welcoming City for People with Disabilities and Seniors, Accessible Accommodation

Bathroom Floorplan:

Scale:  1m



Respiratory and Other Sensitivity

- Management actively pursues a smoke, chemical and toxin-free environment.
- Smoking is not permitted in the premises.
- Cleaning processes and products such as non-toxin detergents, air fresheners etc. are used on room furnishings like carpets, drapes etc.
- Management avoids the use of chemical pesticides, herbicides and non-toxic means of pest control.
- Management may provide a statement as to the practical steps taken to cater for guests with Respiratory and Other Sensitivities, upon request.

Sydney, A Welcoming City for People with Disabilities and Seniors, Accessible Accommodation

Other Facilities

Restaurant

- Serves buffet breakfast only.
- An accessible toilet off a passageway to reception.
- Light meals are also available 24 hours.



Photo: The iBistro.

Swimming Pool – NA

Emergency

- There is a documented Emergency procedure.
- The Emergency warning system comprises an Audio and visual alarm.
- Emergency alarms located in all rooms and public places.
- The Emergency procedure involves a Floor Warden.

Other Services

- Management fosters a “can do attitude” amongst staff.
- Management welcomes guests with disabilities.
- Upon request, management can assist arrange hire and store equipment for guests.