



Photos: The Harbour Bridge and Opera House from Campbell's Cove, Patty Mazza

Sydney

A Welcoming City for People with Disabilities and Seniors, Accessible Accommodation



Easy Access Australia Publishing Pty Ltd

Disclaimer

Easy Access Australia Publishing Pty Ltd, The University of Technology Sydney and the City of Sydney make no representation about the content and suitability of this information for any purpose. It is provided "as is" and "as available" without any guarantees or warranty, expressed or implied as to the currency, accuracy, quality, completeness, availability or usefulness of data, information, product, or process provided through this service, and no responsibility or legal liability is assumed for any damages or inconvenience arising from its use.

In addition the City of Sydney website contains disclaimers:
<http://www.cityofsydney.nsw.gov.au/copyright/Disclaimer.asp>

Sydney, A Welcoming City for People with Disabilities and Seniors, Accessible Accommodation

Meriton Serviced Apartments World Tower

95 Liverpool St
Sydney 2000

Within easy strolling distance of China Town and Darling Harbour precincts and part of the modern World Towers development comprising many shops, cafes and businesses. The apartments are located on levels 61-77 providing stunning views across the city and suburbs.

Number of Access Rooms: 5, with mirror image bathrooms.
Star Rating: 5
Freecall: 1800 214 822
Phone: 61 2 9277 1111
TTY Phone: Nil
Web: www.meritonapartments.com.au
Email: bookings@meriton.net.au

Transport and parking

- Commercial carparking is located in the basement entered from Goulburn St. Parking is ticketed and validated by the hotel. No dedicated access parking spaces and the max height clearance is 2m.
- Secure Parking
<http://www.secureparking.com.au/>



Photo: Level hotel entry and car park entry.

Main entry and foyer

- Level entry from Liverpool Street through hinged glass doors.
- Reception area offers plenty of circulation space and seating and is well lit.
- Polished flooring.
- Reception desk height 1.16m.

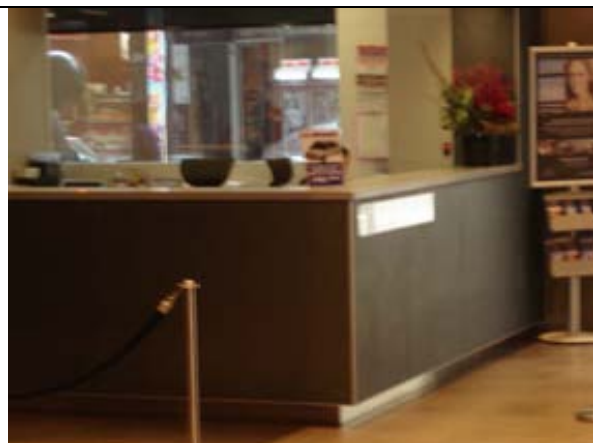


Photo: Reception Foyer.

Sydney, A Welcoming City for People with Disabilities and Seniors, Accessible Accommodation

Signage, Toilets, Telephones, Lifts and Corridors

Signage, Toilets, Telephones	Corridors
<p>Signage clear and highly visible for:</p> <ul style="list-style-type: none"> ○ EXIT • There is no accessible toilet nearby. • There is no accessible telephone nearby. 	<ul style="list-style-type: none"> • Corridor width is 2.6m. • Flooring is low pile carpet. • Access rooms are located close to the lifts. • Hand rails are not installed. • No tactile way finding information.
Lifts	
<ul style="list-style-type: none"> • Tactile lift call button. • Call button height from floor surface is approx. 1m. • An Audible lift arrival signal is provided. • Internal Audio Floor Announcement. • Internal buttons have a tactile component. 	

Sydney, A Welcoming City for People with Disabilities and Seniors, Accessible Accommodation

The Accessible Room(s)

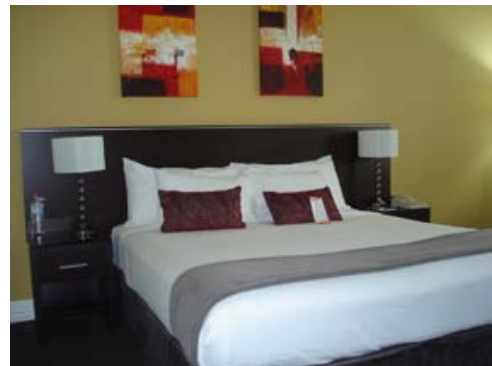
Key Measurements: Access Bed Room 4.0m x 3.3m

- Door width 850mm, the clear open width.
- Latchside space to wall/corner is greater than 600mm.
- Lever handle, 1m height from the floor.
- Magnetic swipe card entry.
- Automatic door return.
- Door opens into kitchen area. The tea/coffee making facilities are accessed in the kitchen.
- Kitchen bench height is 880mm
- The apartment comprises two bedrooms and two bathrooms.
- The master bedroom comprises King bed at 540mm with 10cm space under. There is an ensuite and walk in robe. Circulation space is:
 - Left of bed 1.7m
 - Right of bed 2m
 - Foot 1.2m



Photo: Showing room entry, circulation space and kitchen.

Photos: Master bedroom and circulation space



Sydney, A Welcoming City for People with Disabilities and Seniors, Accessible Accommodation

The second bedroom

- The second bedroom is across a corridor to the accessible bathroom. It comprises a King bed/twin singles. The bed can be moved and raised upon request.
- Height of main bed from top of mattress to floor 520mm.
- Limited space underneath the main bed.
- Distance from the foot of the bed to the furniture or wall 1.15m
- Distance either side of the bed to wall or to other bed – shows circulation space Left 870mm, Right 620mm.
- Lights and TV (remote) be operated from bed.
- The clothes hanging space is reachable but the bed must be moved to access.
- The views are spectacular.
- The airconditioner control is wall mounted at 1.5m above the floor.



Photo: Second bedroom, shelving and bathroom.

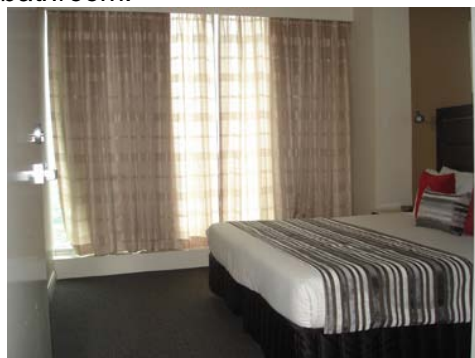


Photo: Circulation space.



Photo: The view!

Sydney, A Welcoming City for People with Disabilities and Seniors, Accessible Accommodation

The Bathroom

Bath room 2.6m x 2m

- Door width 870mm
- Door furniture:
 - Knob 1m
 - Hinged on the right, swings outwards.
- Note the graded entry at 1:6.

The Toilet

- Height (top of pan) 460mm.
- Front of bowl to back wall 840mm.
- Centreline of bowl to side wall 440mm.
- Toilet Grab rails height 940mm.



Photo: Bathroom entry, graded tiles up and toilet/grab rail.

The Shower

- Wheel-in-shower with no hob
- A Hand-held shower rose is provided.
- Lever tap 1m above the floor.
- Two of the three rooms have a small fold down shower seat. All have the plastic seat.

The Basin

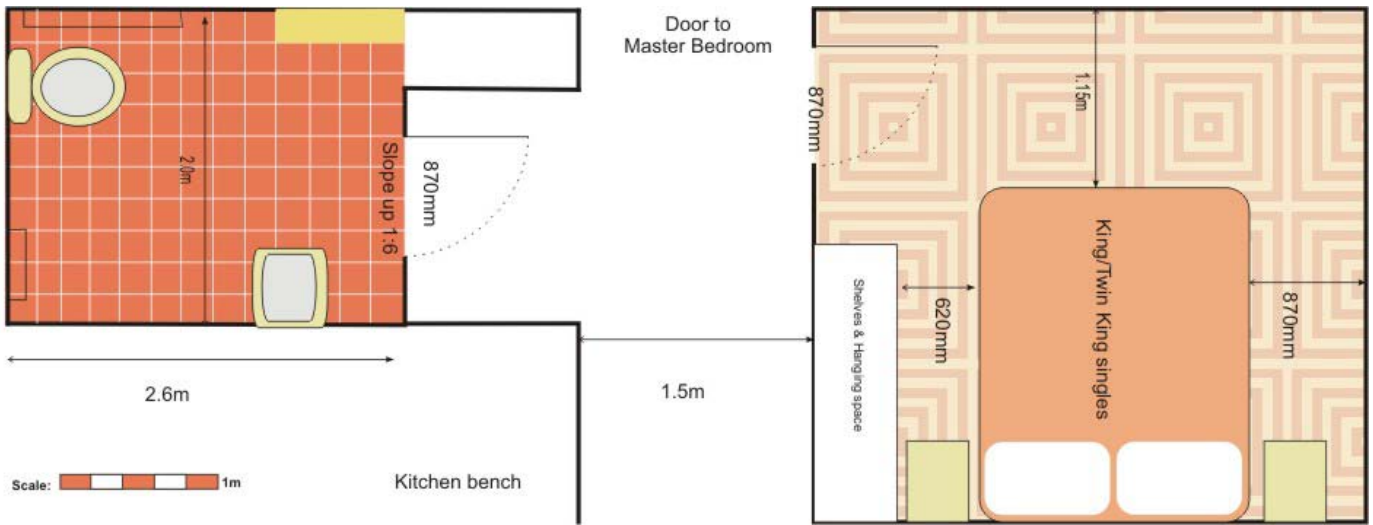
- Basin height front edge to floor 770mm
- A Lever tap is provided.



Photo: Roll- in shower, lever taps and high grab rail.

Sydney, A Welcoming City for People with Disabilities and Seniors, Accessible Accommodation

Bathroom Floorplan:



Respiratory and Other Sensitivity

Respiratory and Other Sensitivity	
<ul style="list-style-type: none"> ▪ Management pursues a smoke, chemical and toxin-free environment. • Management will provide a statement in respect to respiratory and other sensitivities. 	

Other Facilities

Restaurant	Swimming Pool
<ul style="list-style-type: none"> ▪ There are many restaurants and cafes nearby. 	<ul style="list-style-type: none"> ▪ A lap pool is available on Level 61. However access is restricted. An accessible shower/toilet is located on this level. Guests may be able to arrange with reception to access the residential lap pool where there is greater access and an accessible toilet/shower.

**Sydney, A Welcoming City for People with Disabilities and Seniors,
Accessible Accommodation**

Emergency	
<ul style="list-style-type: none">▪ There is a documented Emergency procedure.▪ The Emergency warning system comprises an Audio Alarm only.▪ The Emergency alarms are located in all rooms and public places.	
Other Services	
<ul style="list-style-type: none">▪ Management fosters a “can do attitude” amongst staff and welcomes guests with disabilities.▪ Assistance hiring equipment is available. Furniture can be removed from the room and beds can be raised to accommodate a hoist.	