



Photos: The Harbour Bridge and Opera House from Campbell's Cove, Patty Mazza

Sydney

A Welcoming City for People with Disabilities and Seniors, Accessible Accommodation



Easy Access Australia Publishing Pty Ltd

Disclaimer

Easy Access Australia Publishing Pty Ltd, The University of Technology Sydney and the City of Sydney make no representation about the content and suitability of this information for any purpose. It is provided "as is" and "as available" without any guarantees or warranty, expressed or implied as to the currency, accuracy, quality, completeness, availability or usefulness of data, information, product, or process provided through this service, and no responsibility or legal liability is assumed for any damages or inconvenience arising from its use.

In addition the City of Sydney website contains disclaimers:
<http://www.cityofsydney.nsw.gov.au/copyright/Disclaimer.asp>

Sydney, A Welcoming City for People with Disabilities and Seniors, Accessible Accommodation

The Sebel Surry Hills

28 Albion St
Surry Hills 2010

Located at the southern end of the central business district, The Sebel Surry Hills is close to Central Station and the many restaurants of Surry Hills, Oxford St's nightlife and shopping in Paddington. A feature is the amazing in floor aquarium at reception – be there at feeding time! The hotel comprises two buildings; the East and West Wings – there are two access rooms in each.

Number of Access Rooms:	4, 2 Superior (West Wing) and 2 Delux (East Wing).
Star Rating:	4.5
Freecall:	1800 024 231
Phone:	61 2 9289 0000
TTY Phone:	Nil
Web:	http://www.sebelsurryhills.com.au/ http://www.mirvacotels.com/
Email:	reservations@tsshs.mirvac.com

Transport and parking

- Taxi, train to Central Station.
- Parking is located in a basement car park where there are two dedicated access spaces on Level B1.
- Arrange the parking through the hotel and enter from Albion St.
- Valet parking is available, ask the hotel.



Photo: The Sebel Hotel entry from Albion St.

Sydney, A Welcoming City for People with Disabilities and Seniors, Accessible Accommodation

Main entry and foyer

- Level entry from Albion Street through automatic glass doors.
- The hill slopes away so the ramp is level from the drop off area.
- Spacious Reception area offers substantial circulation space, seating and is well lit.
- A feature of the reception is the aquarium – it's in the floor!
- Reception desk height 1.0m.
- Just past Reception is a platform lift down to the West Wing foyer/meeting/conference area and lifts to the building's floors.



Photo: Entry ramp from drop off area to automatic doors.




Photo: Reception desks, entry to the West Wing and platform lift.

Sydney, A Welcoming City for People with Disabilities and Seniors, Accessible Accommodation


Signage, Toilets, Telephones, Lifts and Corridors

Signage, Toilets, Telephones	Corridors
<p>Signage clear and highly visible for:</p> <ul style="list-style-type: none"> ○ EXIT <ul style="list-style-type: none"> • There is an accessible toilet, on Level 1 West Wing and Townhouse Restaurant & Bar (outside and up the street to an accessible signed entry). • There is no accessible telephone. 	<ul style="list-style-type: none"> • Flooring is dark carpet. • Corridor width 1.4m at the narrowest point. • Access rooms are located close to the lifts in the West Wing but approx 50m in the East Wing. • Hand rails are not installed. • No tactile way finding information.
Lifts	
<ul style="list-style-type: none"> • Tactile lift call button. • Call button height from floor surface is approx. 1m. • An Audible lift arrival signal is provided. • There is no audio floor announcement. • Internal buttons have a tactile component – some have a Braille component. 	


The Accessible Room(s)

Delux Rooms in the East Wing, Key Measurements: 3.5m x 5.9m	
<ul style="list-style-type: none"> • Door width 750mm clear open width. • Lever handle 1m above the floor, internal door furniture round polished metal knob. • Swipe card entry. • Automatic door return, no latch side space. • Zippable twin King singles or King bed. • Height of main bed from top of mattress to floor 540mm. • Limited Space underneath the bed approx 10cm. • Distance from the bed; 	 <p style="text-align: center;"><i>Photo: Room entry and circulation space.</i></p>

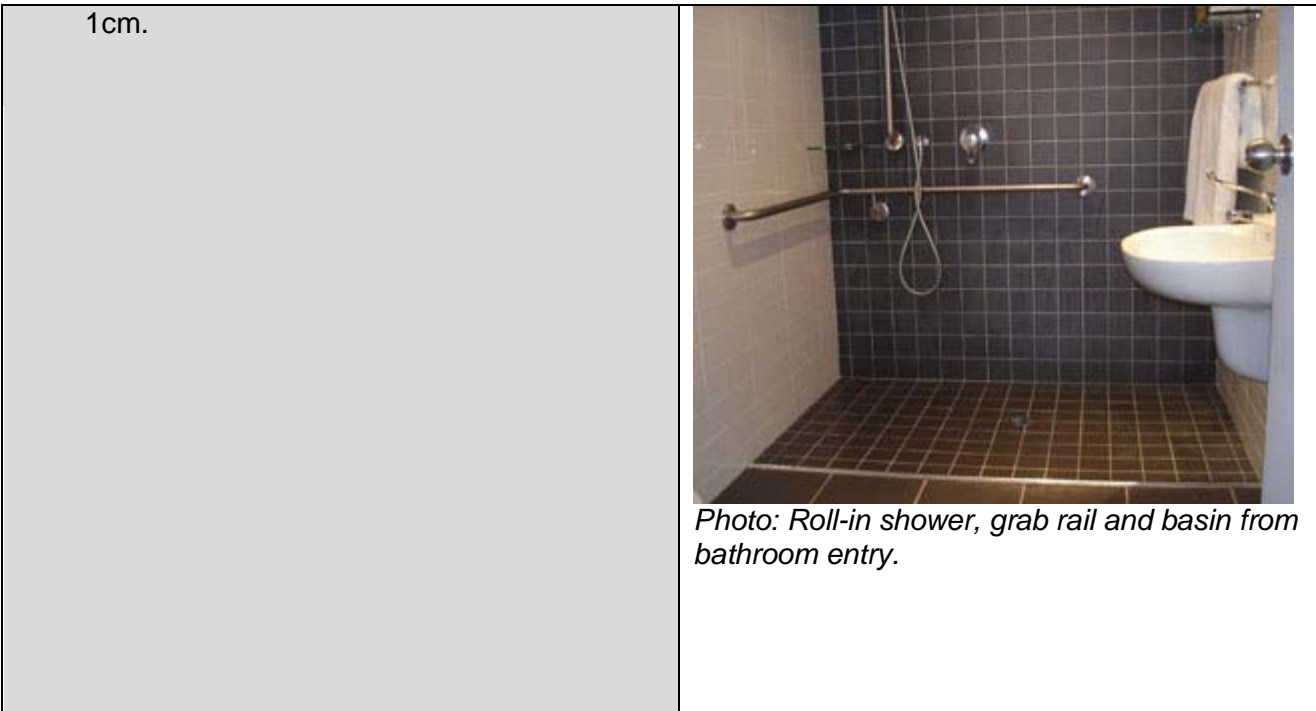
Sydney, A Welcoming City for People with Disabilities and Seniors, Accessible Accommodation

<ul style="list-style-type: none">○ Foot of the wall 1.4m.○ Right side to the wall 1.3m○ Left side to the wall more than 2m.● Sofa is a sofa bed.● Lights, phone and TV (remote) can be operated from bed.● Light switches 1.0m.● Airconditioning control is high – approx 1.4m.● The tea/coffee making facilities can be reached.● The view from the window is city buildings.	 <p><i>Photo: Room, bed, desk and sofa.</i></p>
---	---

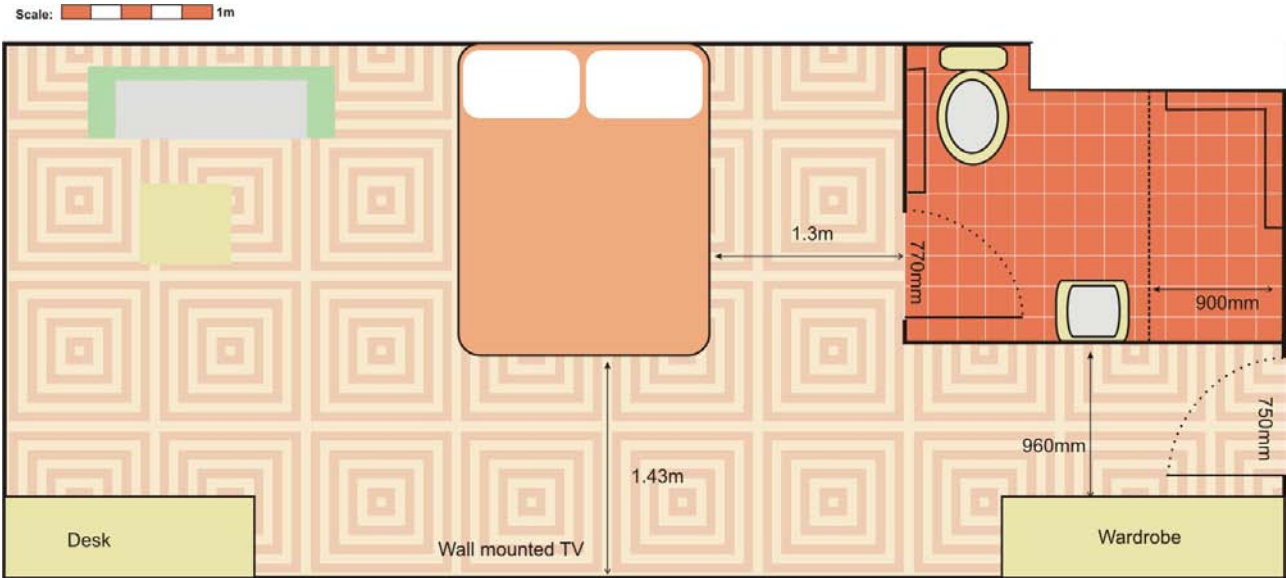
Bathroom measures 2.5m x 2.0mm

<ul style="list-style-type: none">● Hinged door width 770mm, knob.● Small lip into the bathroom of about 1 cm.● Basin height front edge to floor 770mm.● Lever taps. <p>The Toilet</p> <ul style="list-style-type: none">● Height (top of pan) 460mm.● Front of bowl to back wall 820mm.● Centerline of bowl to side wall 480mm.● Toilet Grab rails height 820mm. <p>The Shower</p> <ul style="list-style-type: none">● Wheel-in-shower.● Hand-held shower rose with Lever taps 1m● Shower grab rails height 820mm.● Plastic shower seat available.● Note the raised triangular metal strip about	 <p><i>Photo: Toilet and grab rails.</i></p>
---	--

Sydney, A Welcoming City for People with Disabilities and Seniors, Accessible Accommodation



Delux Room Floorplan:



Sydney, A Welcoming City for People with Disabilities and Seniors, Accessible Accommodation

The Accessible Room(s)

Superior Rooms in the West Wing, Key Measurements: 4.1m x 5.2m (irregular shaped room)

- Door width 750mm clear open width.
- Lever handle 1m above the floor.
- Proximity card entry.
- Automatic door return, limited latch side space.
- Zippable twin King singles or King bed.
- Height of main bed from top of mattress to floor 540mm.
- Limited Space underneath the bed approx 10cm.
- Distance from the bed;
 - Foot of the desk 1.4m.
- Lights, phone and TV (remote) can be operated from bed.
- Light switches 1.0m.
- Airconditioning control is approx 1.0m.
- The tea/coffee making facilities can be reached.
- The view from the window is city buildings.



Photo: Room entry and circulation space.



Photo: Room, twin beds and desk.

Sydney, A Welcoming City for People with Disabilities and Seniors, Accessible Accommodation

Bathroom measures 2.2m x 2.9mm

- Hinged door opens inwards width 770mm, knob.
- An auto door closer closes the bathroom door.
- Basin height front edge to floor 940mm and approx 800mm.
- Lever taps.

The Toilet

- Height (top of pan) 450mm.
- Front of bowl to back wall 800mm.
- Centerline of bowl to side wall 460mm.
- Toilet Grab rails height 840mm.

The Shower

- Wheel-in-shower.
- Hand-held shower rose with Lever taps 1m
- Vertical shower grab rail only.
- Plastic shower seat available.



Photo: Basin next to door.



Photo: Roll-in shower, vertical grab rail.

**Sydney, A Welcoming City for People with Disabilities and Seniors,
Accessible Accommodation**

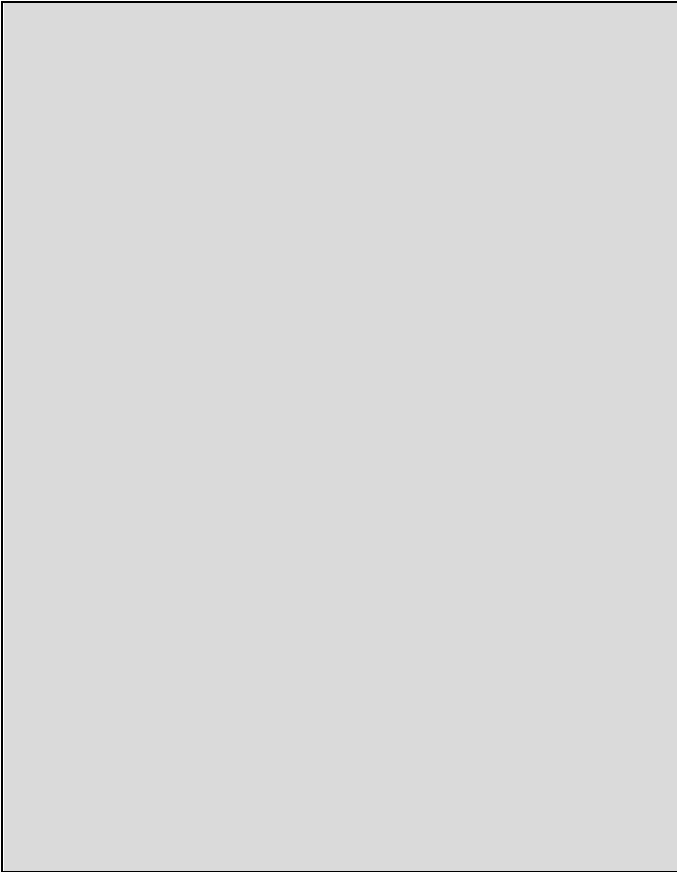
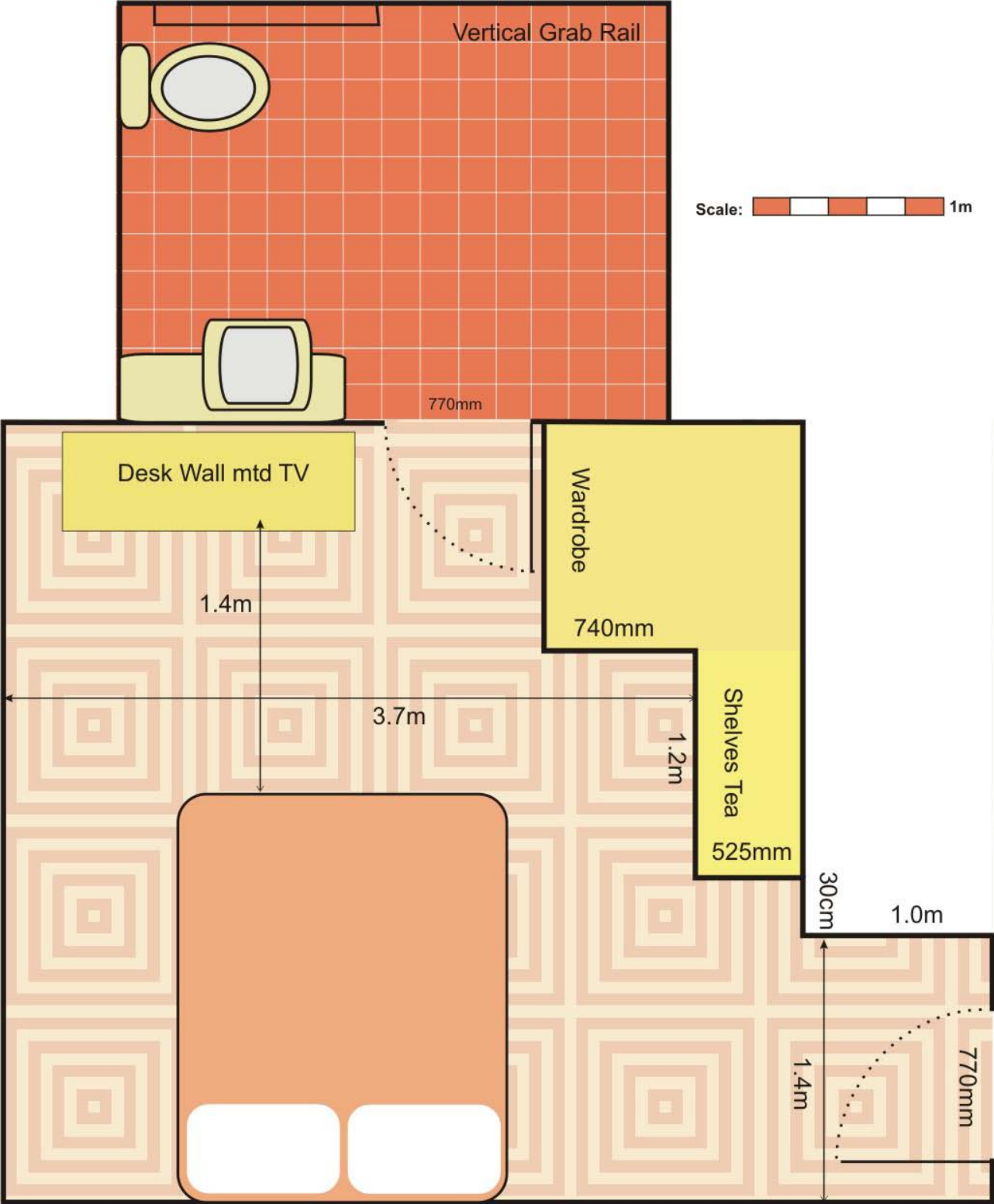


Photo: Toilet and grab rails.

Sydney, A Welcoming City for People with Disabilities and Seniors, Accessible Accommodation

Superior Room Floorplan:



Sydney, A Welcoming City for People with Disabilities and Seniors, Accessible Accommodation

Respiratory and Other Sensitivity

<ul style="list-style-type: none"> ▪ The Sebel Surry Hills is a non smoking hotel. ▪ Management actively pursues a smoke, chemical and toxin-free environment. Eco Lab cleaning products are employed. • Cleaning processes and products can be adjusted upon request and discussion with management (prior to arrival). • Management avoids the use of chemical pesticides, herbicides and non-toxic means of pest control. Pest treatment are undertaken within Food & Safety Guidelines. • Management welcomes guests with Seeing Eye dogs. 	
---	--

Other Facilities

Restaurant	Swimming Pool
<ul style="list-style-type: none"> ▪ Two Restaurants: Albies on Level 1 and the Townhouse Restaurant & Bar (via Albion St and a signed access path of travel). ▪ Tables are pedestal and moveable. ▪ Large Print menus can be made available upon request. ▪ An accessible toilet is available at The Townhouse Restaurant & Bar. 	<ul style="list-style-type: none"> ▪ A swimming pool and gymnasium are located in the West Wing building. ▪ The pool is a floor above the gym. ▪ There is no accessible change room or lift/hoist. ▪ There is no step or lip into the pool.
Emergency	Other Services
<ul style="list-style-type: none"> ▪ There is a documented Emergency procedure. ▪ The Emergency warning system comprises an Audio and visual alarm. ▪ Emergency alarms located in all rooms and public places. ▪ The Emergency procedure involves a Floor Warden. 	<ul style="list-style-type: none"> ▪ Management fosters a “can do attitude” amongst staff. ▪ Management welcomes guests with disabilities. ▪ Upon request, management can assist arrange hire equipment for guests.