



*Photos: The Harbour Bridge and Opera House from Campbell's Cove, Patty Mazza*

## Sydney

# A Welcoming City for People with Disabilities and Seniors, Accessible Accommodation



**Easy Access Australia Publishing Pty Ltd**

### **Disclaimer**

Easy Access Australia Publishing Pty Ltd, The University of Technology Sydney and the City of Sydney make no representation about the content and suitability of this information for any purpose. It is provided "as is" and "as available" without any guarantees or warranty, expressed or implied as to the currency, accuracy, quality, completeness, availability or usefulness of data, information, product, or process provided through this service, and no responsibility or legal liability is assumed for any damages or inconvenience arising from its use.

In addition the City of Sydney website contains disclaimers:  
<http://www.cityofsydney.nsw.gov.au/copyright/Disclaimer.asp>

# Sydney, A Welcoming City for People with Disabilities and Seniors, Accessible Accommodation

---

## Travelodge Wynyard

7-9 York St  
Sydney 2000

The Travelodge Wynyard is ideally located for accessing Sydney's tourist and culinary precinct of Darling Harbour or strolling down to the historic Rocks area. From there it's a short stroll to Circular Quay and The Opera House.

Number of Access Rooms:	4
Star Rating:	4
Freecall:	1300 886 886
Phone:	61 2 9274 1274
TTY Phone:	Nil
Web:	<a href="http://www.travelodge.com.au">www.travelodge.com.au</a>
Email:	<a href="mailto:twys@travelodge.com.au">twys@travelodge.com.au</a>

## Transport and parking

- The hotel is a small block away from Wynyard Station and bus terminus.
- Carparking is available in the basement carpark where there is one dedicated space adjacent to the lift on level P2.
- Entry is from Margaret St.



*Photo: Street view.*



*Photo: Dedicated parking space.*

# Sydney, A Welcoming City for People with Disabilities and Seniors, Accessible Accommodation

## Main entry and foyer

- Gentle grade entry accessed from York St, just up from Margaret St. Entry is via automatic hinged glass doors.
- Reception area offers plenty of circulation space is brightly lit by daylight from a glass atrium.
- Plenty of seating provided in a waiting room area.
- Polished light coloured flooring .
- Reception desk height 1.24m.
- The café is adjacent to Reception.
- An accessible unisex toilet is accessed from the café.



Photo: Reception desk with café.



Photo: Ramped entry from York St.



Photo: Reception desk.

## Signage, Toilets, Telephones, Lifts and Corridors

Signage, Toilets, Telephones	Corridors
<p>Signage clear and highly visible for:</p> <ul style="list-style-type: none"> <li>○ EXIT</li> <li>• The accessible unisex toilet is located through the café.</li> <li>• There is no accessible telephone nearby.</li> </ul>	<ul style="list-style-type: none"> <li>• Corridor width is 1.4m.</li> <li>• Flooring is low pile carpet.</li> <li>• Access rooms are located about 10m from the lifts.</li> <li>• Hand rails are not installed.</li> <li>• No tactile way finding information.</li> </ul>

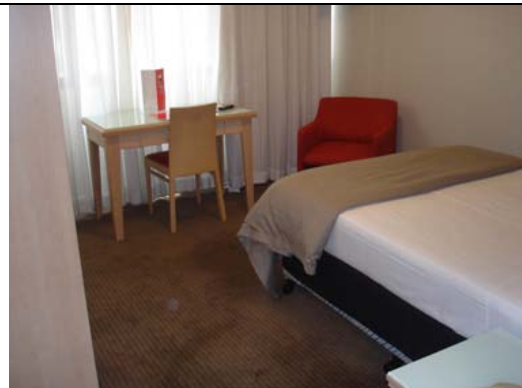
## Sydney, A Welcoming City for People with Disabilities and Seniors, Accessible Accommodation

Lifts	
<ul style="list-style-type: none"> <li>• Tactile lift call button.</li> <li>• Call button height from floor surface is approx. 1.1m.</li> <li>• An Audible lift arrival signal is provided.</li> <li>• No internal Audio Floor Announcement.</li> <li>• Internal buttons have tactile components in the range 1m – 1.2m.</li> </ul>	

### The Accessible Room(s)

#### **Key Measurements: Access Bed Room 6.4m x 3.5m**

- Door width 870mm, the clear open width.
- Latchside space to wall/corner is 445mm.
- Lever handle, 1m height from the floor.
- Magnetic swipe card entry.
- Automatic door return.
- Internal corridor width 1.4m.
- One double bed, 600mm in height to the floor.
- Limited space underneath.
- Distance from the bed to furniture/wall at:
  - Foot 810mm to the wall,
  - Right side to wardrobe 1.1m
  - Left side to wall 500mm.
- Furniture can be removed upon request.
- Ta/coffee making facilities are reachable.
- The airconditioner control is wall mounted at 1.4m above the floor.
- Teletext is not available on the TV.
- Lights and TV (remote) can be operated from bed.



*Photo: From the entry corridor showing bed and circulation space on side and at foot.*



*Photo: From foot of bed showing entry and graded area before bathroom entry.*

# Sydney, A Welcoming City for People with Disabilities and Seniors, Accessible Accommodation

- The clothes hanging space is not reachable.
- The views are across the city.



*Photo: Showing wardrobe, end of bed and table & chair.*

## Bathroom

### Bath room 2.85m x 1.9m

- There is a level entry into the bathroom but there's a grade upto the level space. A small lip or step has been eliminated by creating a grade.
- Sliding Door width 700mm

#### The Basin

- Basin height bottom front edge to floor 800mm.
- A Lever tap is provided.



*Photo: Showing basin, mirror & hair dryer*

#### The Toilet

- Height (top of pan) 450mm.
- Front of bowl to back wall 800mm.
- Centreline of bowl to side wall 440mm.
- Toilet Grab rails height 700mm.



*Photo: Through sliding door showing toilet & grab rail.*

# Sydney, A Welcoming City for People with Disabilities and Seniors, Accessible Accommodation

## The Shower

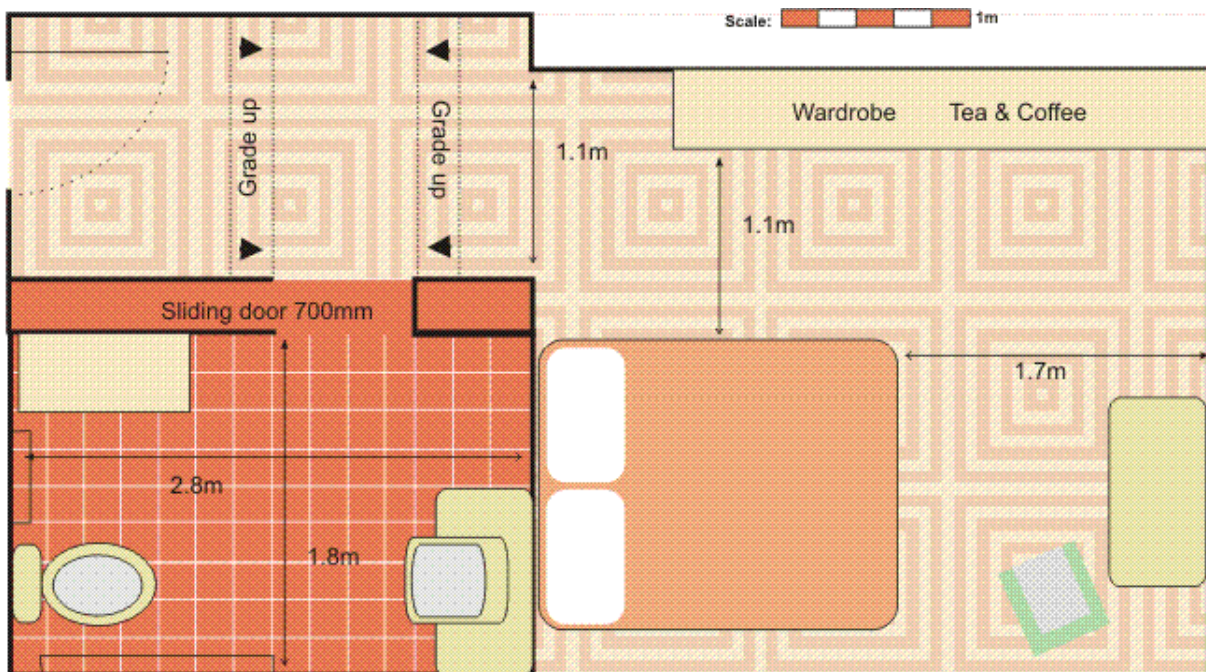
- Wheel-in-shower with no hob.
- A Hand-held shower rose is provided.
- Grab rails are 700mm.
- Lever tap 1m above the floor.

The fold down shower seat measures 400mm by 900mm and is 450mm high..



Photo: Toilet, grabrail and shower area.

## Bathroom Floorplan:



## Sydney, A Welcoming City for People with Disabilities and Seniors, Accessible Accommodation

---

### Other Facilities

<b><i>Restaurants &amp; Bar</i></b>		<b><i>Emergency</i></b>	
<ul style="list-style-type: none"> <li>▪ A café is located adjacent to Reception.</li> <li>▪ Tables are moveable.</li> <li>▪ An Accessible unisex toilet is near by on this level</li> </ul>		<ul style="list-style-type: none"> <li>▪ There is a documented Emergency procedure.</li> <li>▪ The Emergency warning system comprises an Audio Alarm only.</li> <li>▪ The Emergency alarms are located in all rooms and public places.</li> </ul>	
<b><i>Swimming Pool - NA</i></b>			
<b><i>Other Services</i></b>		<b><i>Respiratory and Other Sensitivity</i></b>	
<ul style="list-style-type: none"> <li>▪ Management fosters a “can do attitude” amongst staff and welcomes guests with disabilities.</li> <li>▪ Assistance hiring equipment is available.</li> <li>▪ Furniture can be removed from the room and beds can be raised to accommodate a hoist.</li> </ul>		<ul style="list-style-type: none"> <li>▪ Travelodge Wynyard is a non smoking hotel.</li> <li>• Please contact management in respect to specific information on:               <ul style="list-style-type: none"> <li>▪ respiratory and other chemical sensitivities,</li> <li>▪ policy covering assistance animals (other than seeing eye dogs).</li> </ul> </li> </ul>	